

OAK

KINGBIRD
BOTANIC RIDGE

\$576,400

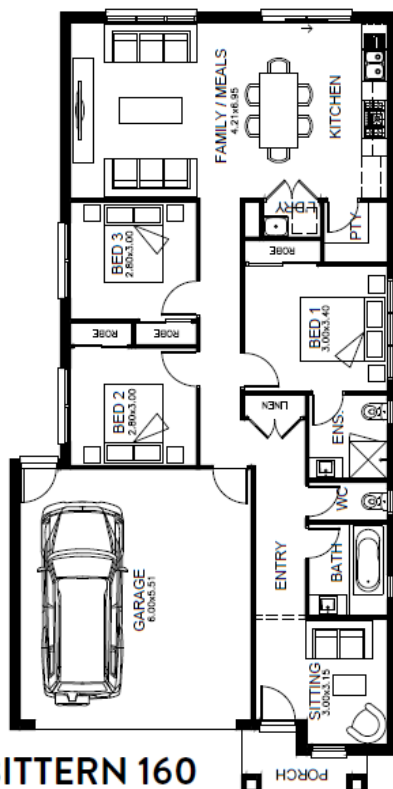
3 2 2 2

LOT 1519 KINGBIRD ESTATE BOTANIC RIDGE

Land Size: 411m2
Block Frontage: 12.5m
Block Depth: 32.9mm
House Size: 16.21sq

BREAKFREE INCLUSIONS

- Resort Facade
- Awning Windows to Front
- Concrete Roof Tiles
- Garage Door with Auto Controller
- Gas Ducted Heating
- Floor Coverings
- Stainless Steel Appliances
- Professional Colour Consultancy
- Designer Tapware & Fittings
- Enviroheat Heat Pump Hot Water Service
- Colour Concrete Driveway

For more information please contact Chris Allan on
0475 144 713 or email chris.a@oakliving.com.au


BITTERN 160